

ALM-PLM Interop user group
Workings
Information needs in the scenario

Working sessions primarily 31/8/15, 11/09/15

Thanks to contributors: Torsten Gilz, Pawel Chadzynski, Rainer Ersch,
Gray Bachelor

Our mission is to identify the major artefacts in the scenario

- What are the main artefacts in the scenario?
 - Those explicitly named ?
 - Other “Typical” key artefacts ?
- What are their main properties
- and their typical relationships
- What are the available terminologies ?

Analysis of the scenario

<http://open-services.net/forums/viewthread/221/>

- Artefacts named
 - Change Request
 - Artefact
 - Configuration
 - Impact analysis (the results of)
- Others mentioned for discussion
 - Revision
 - Impacted Item
 - Configured Item
- Assume item, revision and artefact are the same i.e. artefact

Diagram1: simple case

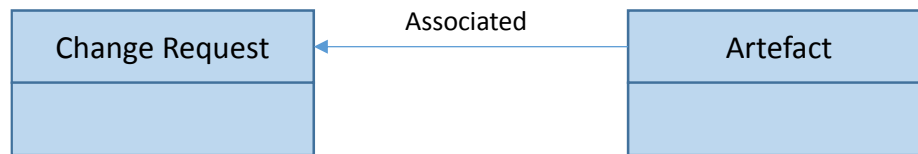
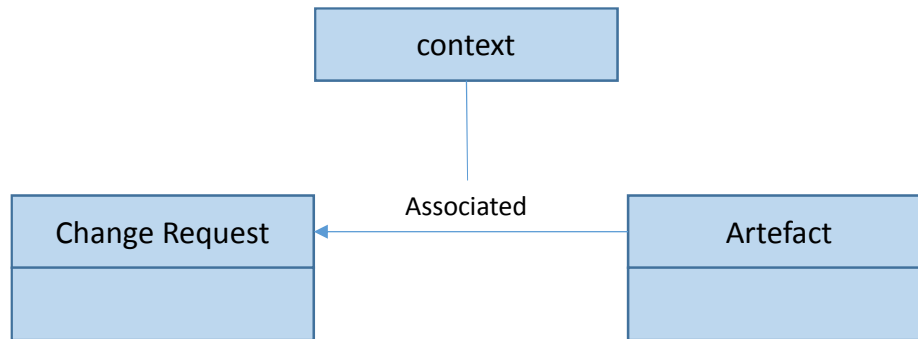


Diagram2: context as a attribute of a link



Note: this is consistent with OSLC Config management spec

Diagram3: Affected items as an query

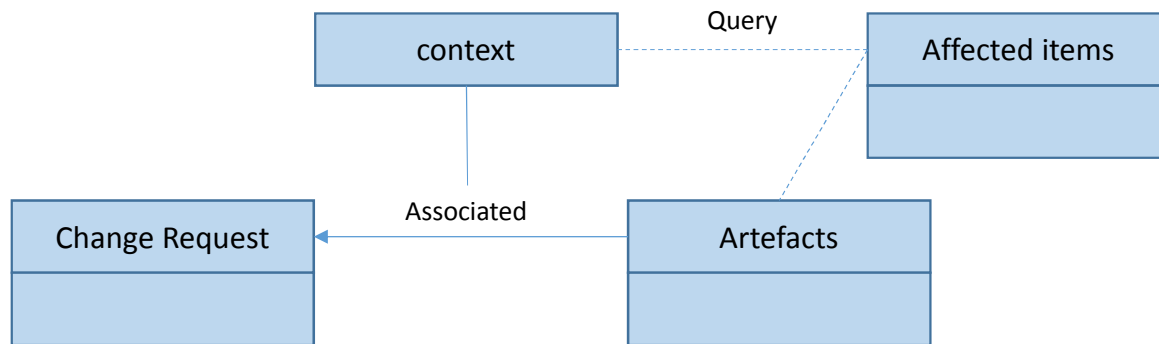


Diagram4: Introducing the combined context

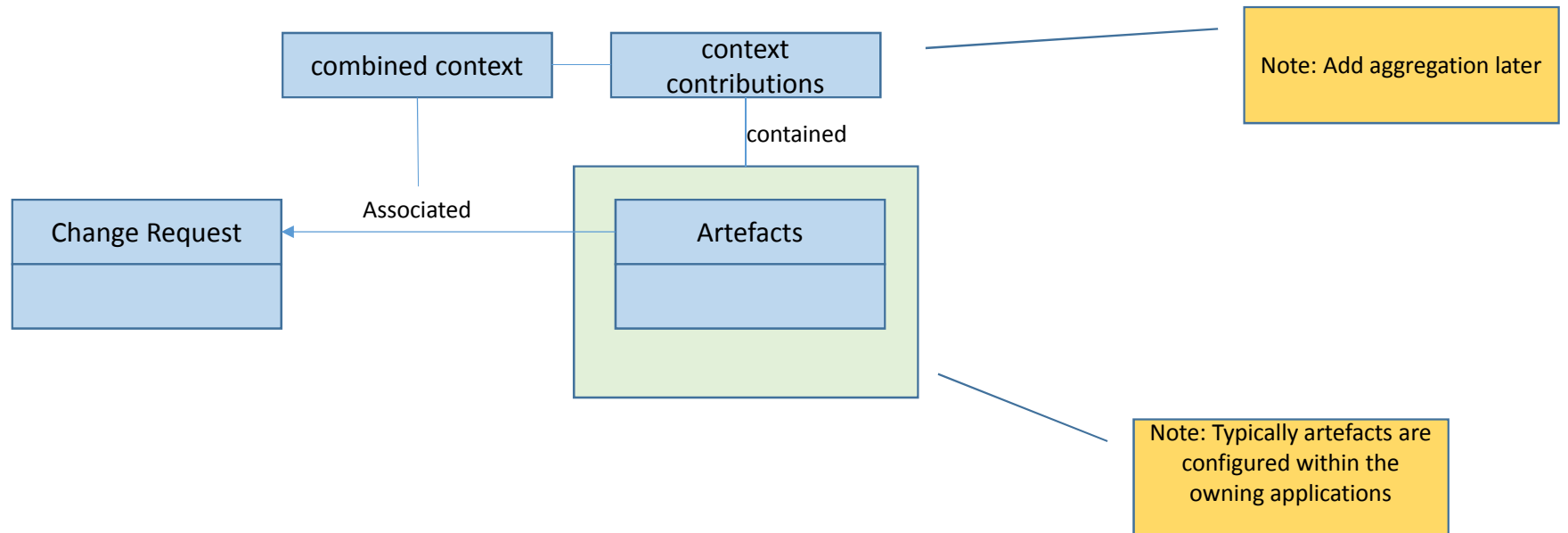
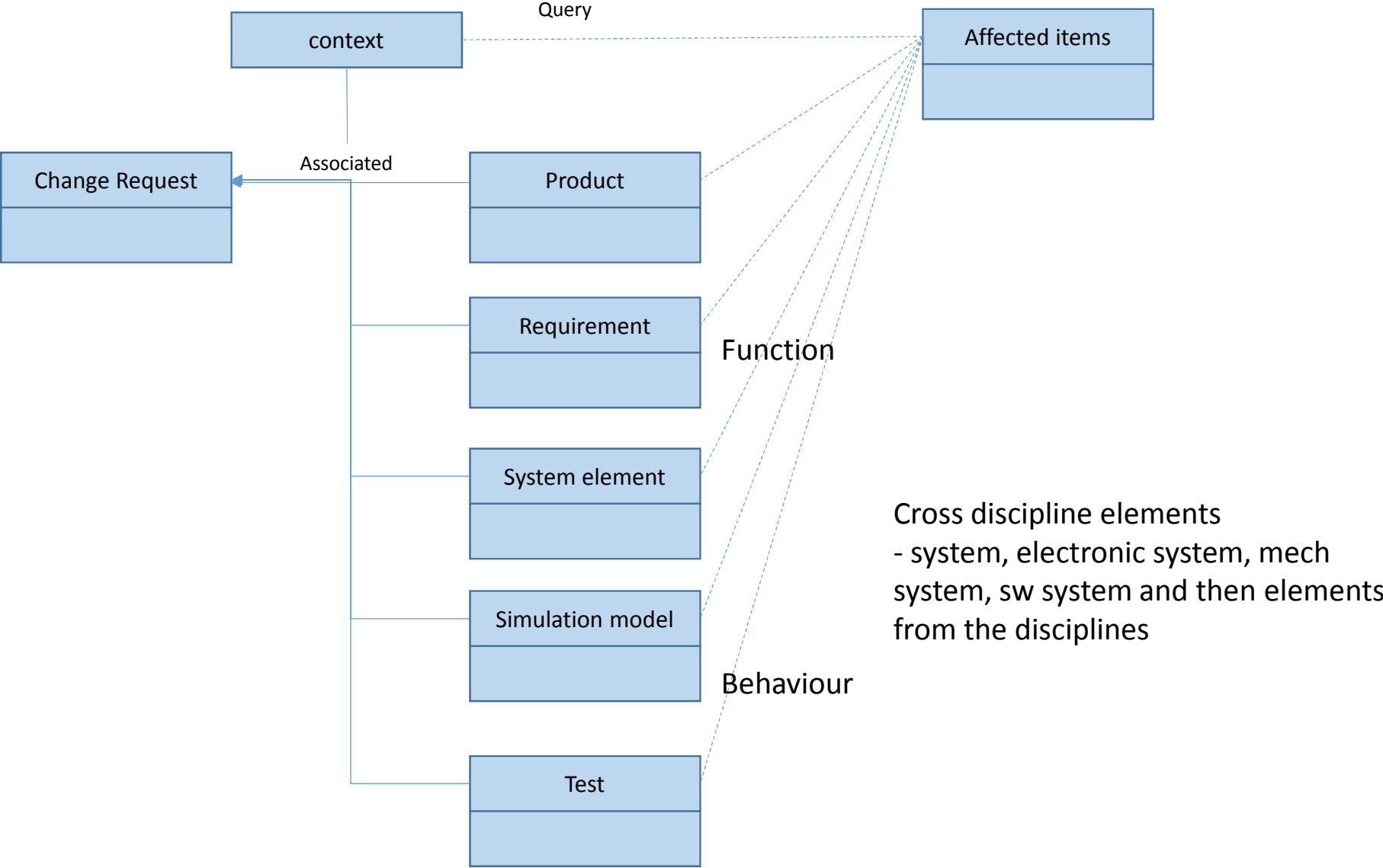


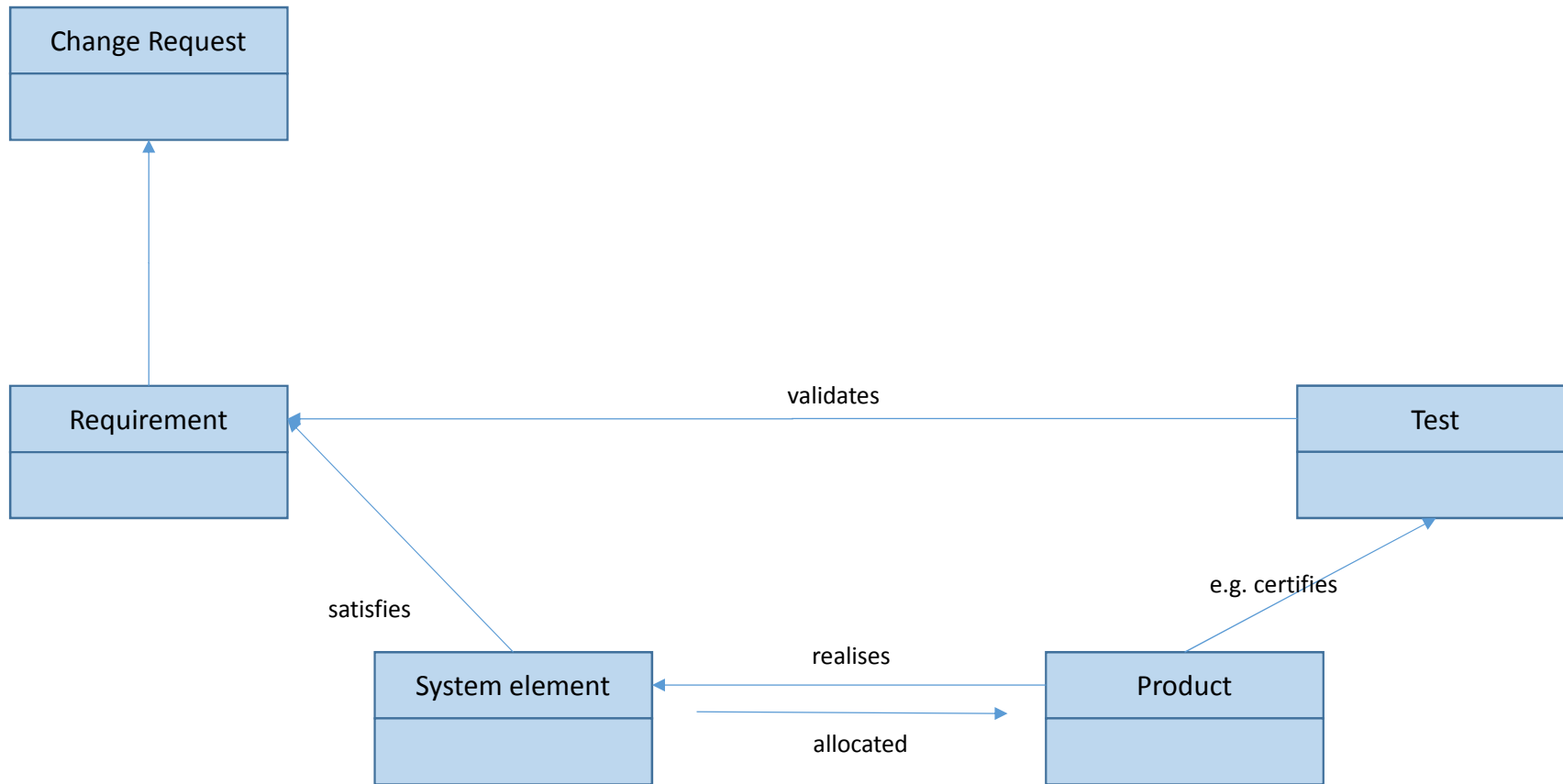
Diagram 5: Elaborated case with well known artefacts



Relationship

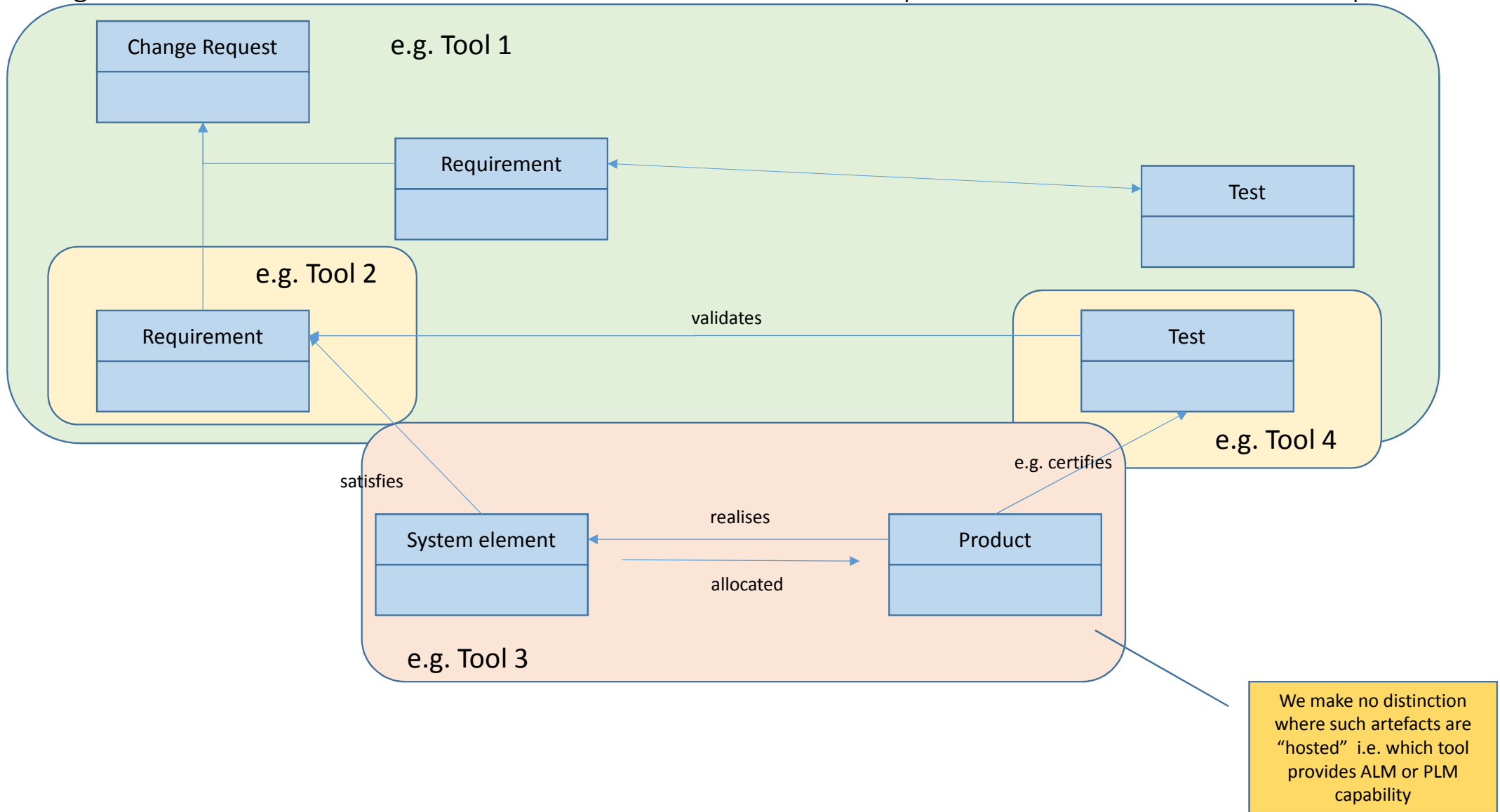
- CR to CR
- CR to Product or other affected item (artefact)
- Product to Product – composition, equivalence, concept
- Product to Req - allocation
- System Function to Product – joint realisation

Diagram6: Elaborated case with relationship between key artefacts



Note: Typically context applies to all artefacts and associations

Diagram 7: These artefacts can occur in either domain and in multiple instances across the IT landscape



Approach to finding examples

- Pick some “famous” / wellknown views and ask the question how would we achieve that across a “selected” set
 - A PLM application e.g. Aras
 - A system modeling tool e.g. Rhapsody Design Manager
 - A requirements database e.g. DOORS
 - A simulation tool like Simulink – block diagram
 - An EE tool e.g. Preevision – high level function, schematic, message list, wiring
 - A MCAD tool e.g. Catia
 - A software development tool e.g. Rational Team Concert

What examples and specific cases to show

- Specific artefacts are highlighted to indicate which major applications “should” be considered.
 - e.g., “we should consider Simulink”
 - e.g. to include certain lifecycle phases “e.g. Test and Support”
 - e.g. to show certain artefacts are needed for the supply chain

Expose common system elements

- Logical
- Functional
- Behaviour
- Physical

Diagram 8: Sample: Aras Innovator view – meta-model summary

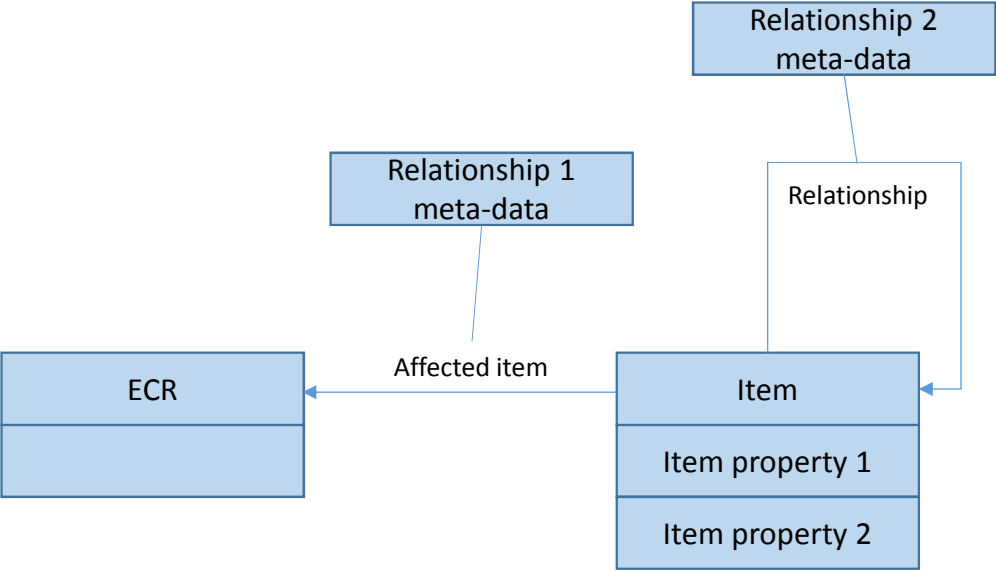
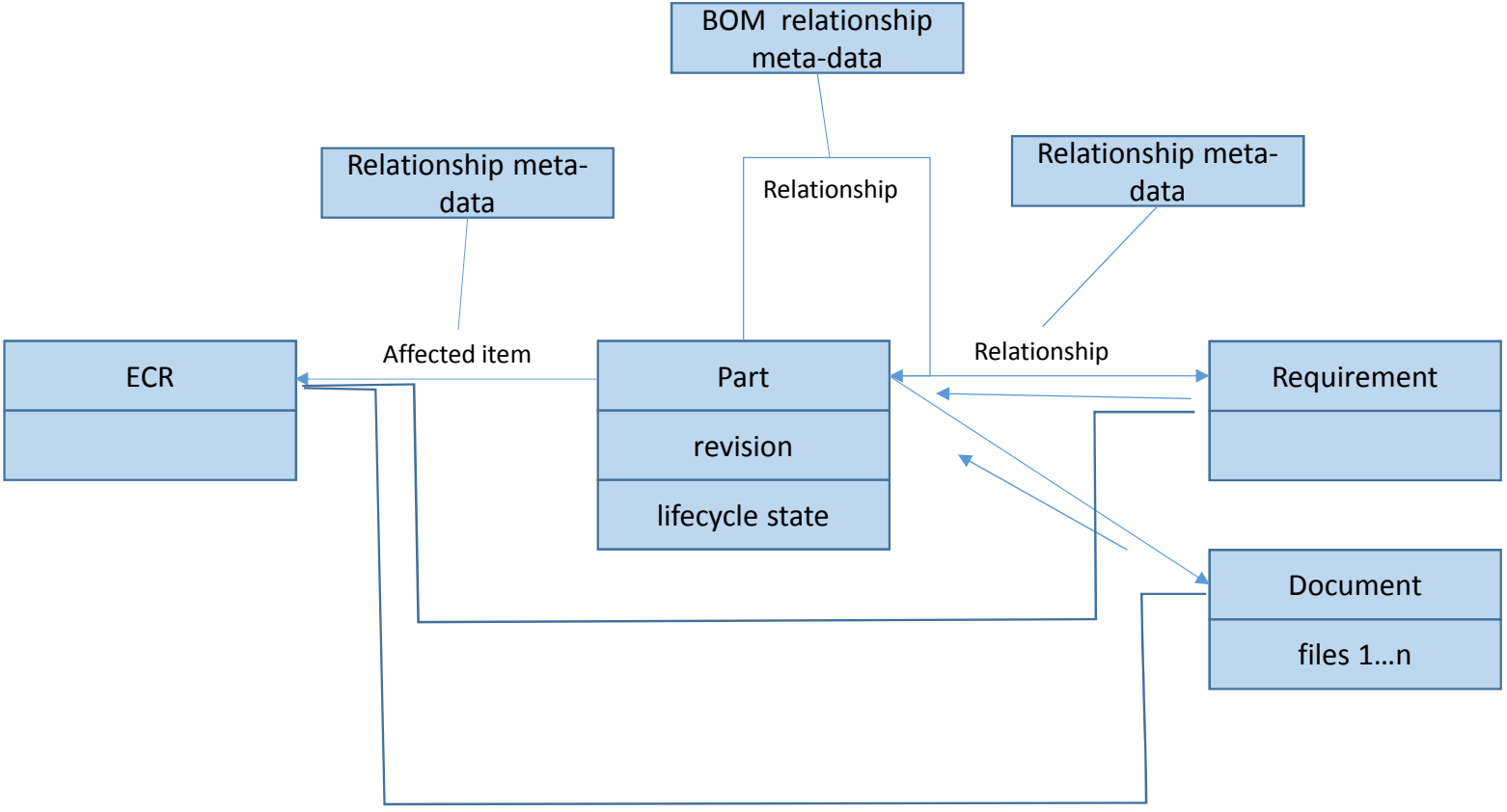
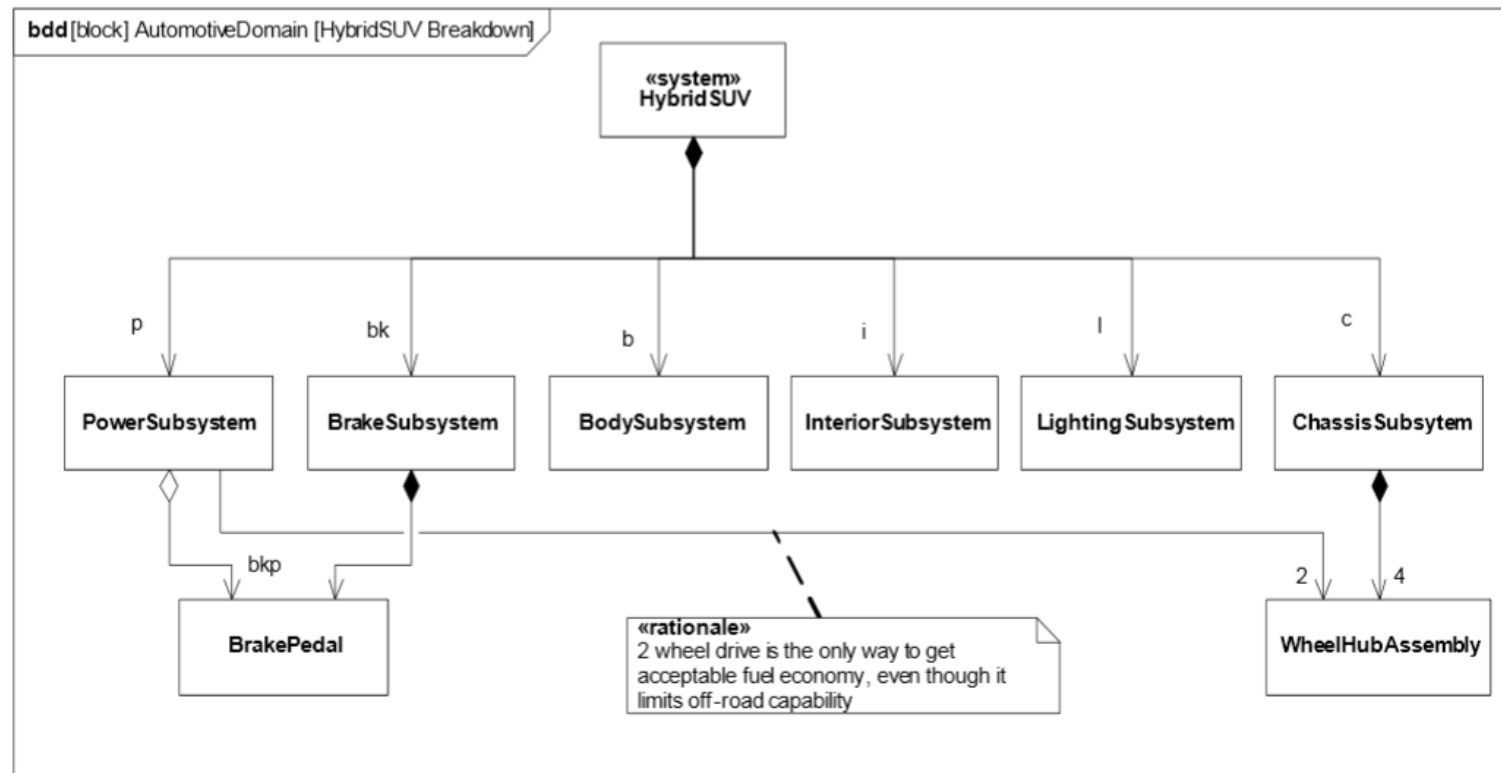


Diagram 9: Aras Innovator view



Selecting examples from the HSUV

Selecting (nearly) real examples from the HSUV model



Thanks to <http://www.omg.org/ocsm/HSUV.pdf>

Topics for discussion

- What other examples of artefact and relationships are at hand ?
- What examples to expose from the HSUV model ?