

PROMIS Architecture

PROject Management Information exchange Services Architecture

PROMIS Project: Mission, Strategy, Technology, and Collaboration with OSLC

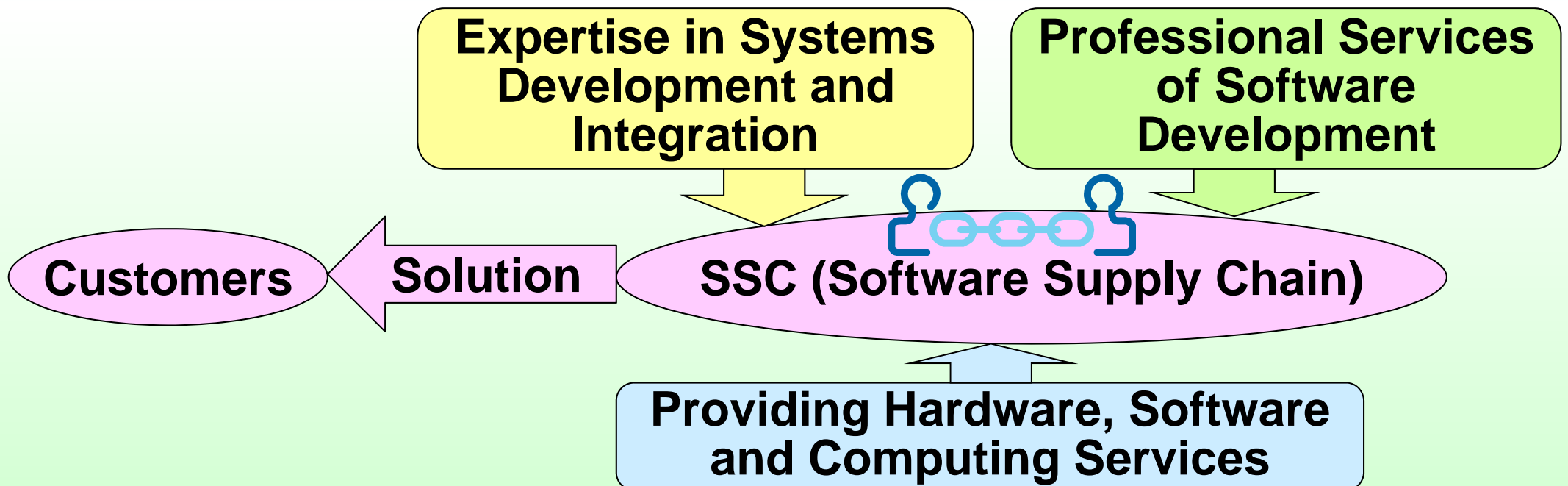
Mikio Aoyama (Nanzan University),
Tsutomu Kamimura (IBM), Kazuo Yabuta, Hiroyuki Yoshida (Fujitsu),
Takashi Niwa(NTT DATA), Toshiya Chiba (Hitachi), Hiroshi Noto (NRI)



Mission of PROMIS

PROMIS Makes SSC(Software Supply Chain) Viable

- ➡ **SSC has been a common practice in Japan**
 - 👉 Up to some 1,000 people in a systems development over a SSC
 - 👉 Project management is still a challenge
- ➡ **PROMIS visualizes project along with SSC, and makes management smarter: real-time, responsive, and flexible**



About PROMIS

- 👉 **Organization: Next-Generation Project Management Data Exchange Architecture Consortium**
- 👉 **Technology: PROMIS(PROject Management Information exchange Services)**
- 👉 **Foundation: May 21, 2012**

👉 **Members**

- 👉 **Nanzan University,**
- 👉 **IBM Japan, Ltd.,**
- 👉 **Fujitsu Limited,**
- 👉 **NEC Corporation,**
- 👉 **NTT Data Corporation,**
- 👉 **Hitachi, Ltd., and**
- 👉 **Nomura Research Institute, Ltd**

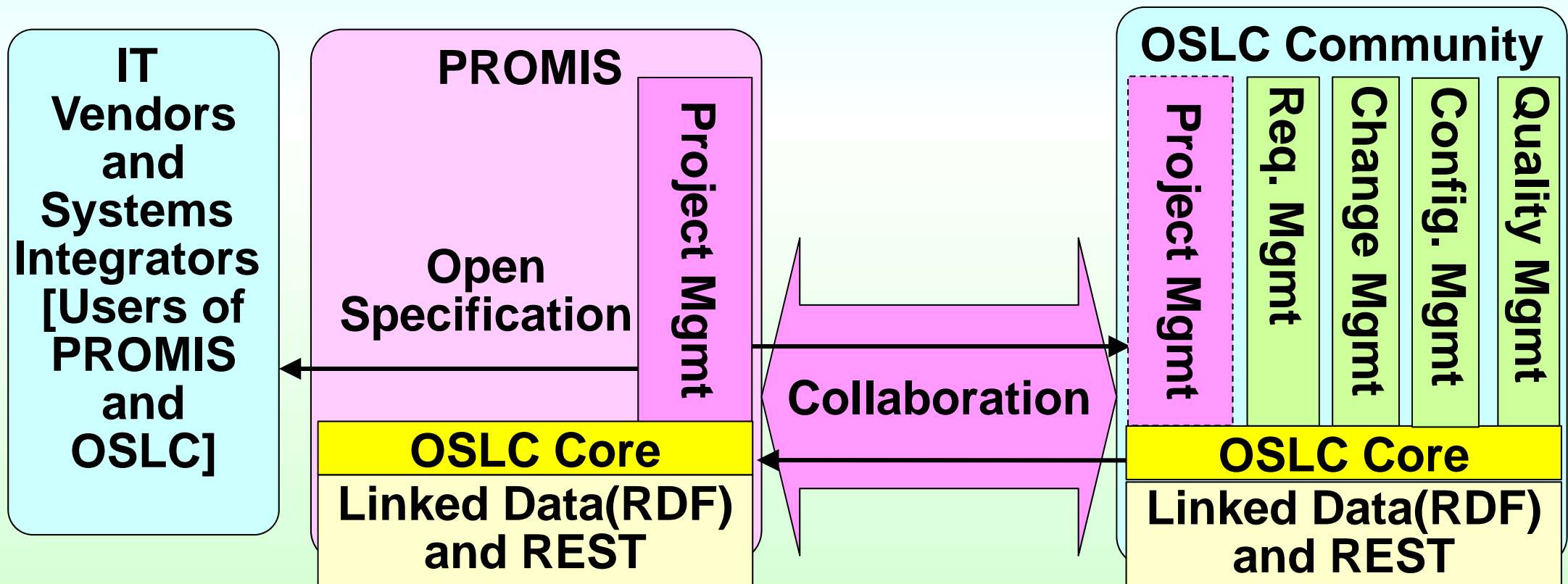


A Scene of PROMIS Meeting at IBM Japan

OSLC and PROMIS

➡ **Facilitating Collaboration by Collaboration**

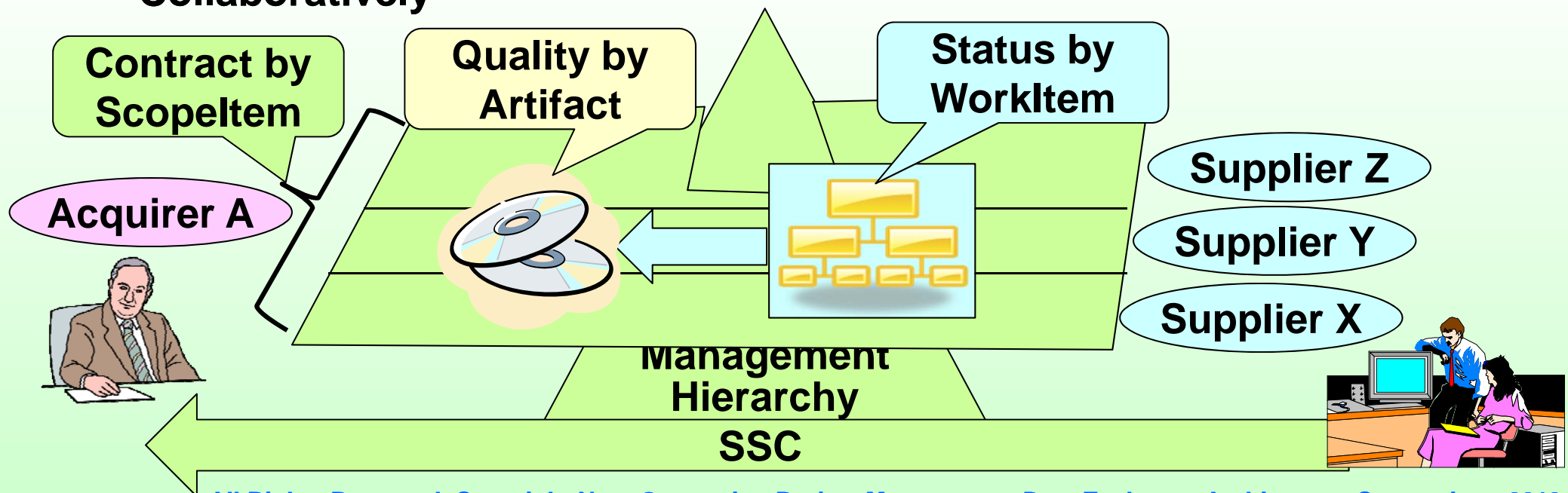
➡ **PROMIS Platform is Implemented on Top of OSLC Core**



PROMIS Strategy

Collaborative Management

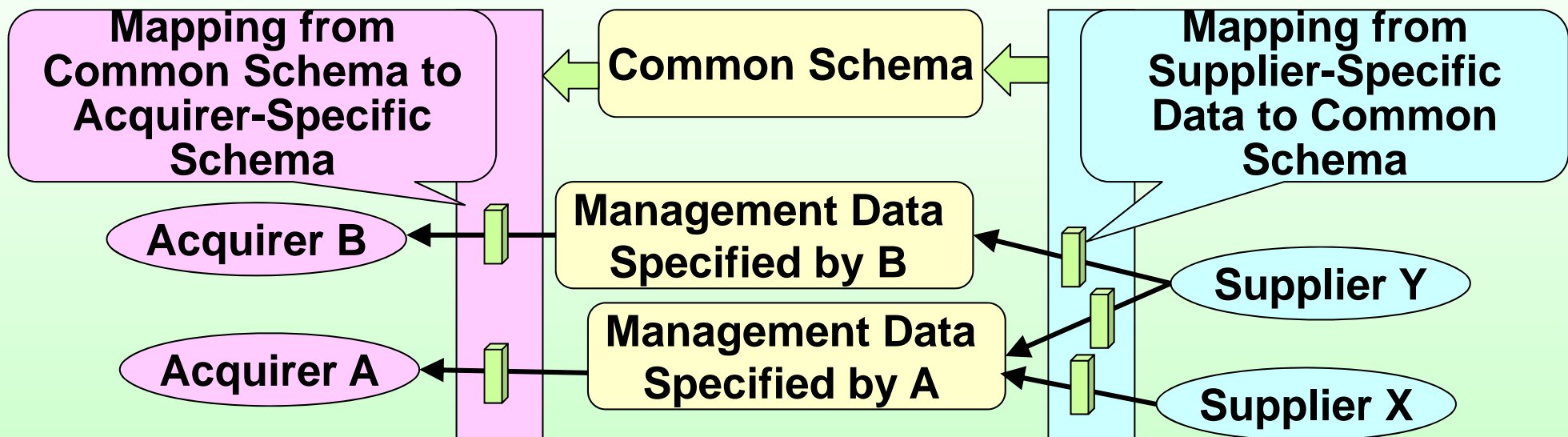
- **Management across the Organizational Boundaries**
- **Just a Contract is Not Enough**
 - 👉 **Failure of One Supplier May Cause a Break of the Entire SSC**
- **Win-Win Approach: Collaborative Managing along with SSC**
 - 👉 **Share the *Triple* Management Information at an Appropriate Level**
 - 👉 **Scopeltem, WorkItem, Artifact**
 - 👉 **Agile Feedback: Predict “Bad Smell” and Solve the Problems Collaboratively**



PROMIS Technology

PROMIS Modeling Framework and Platform

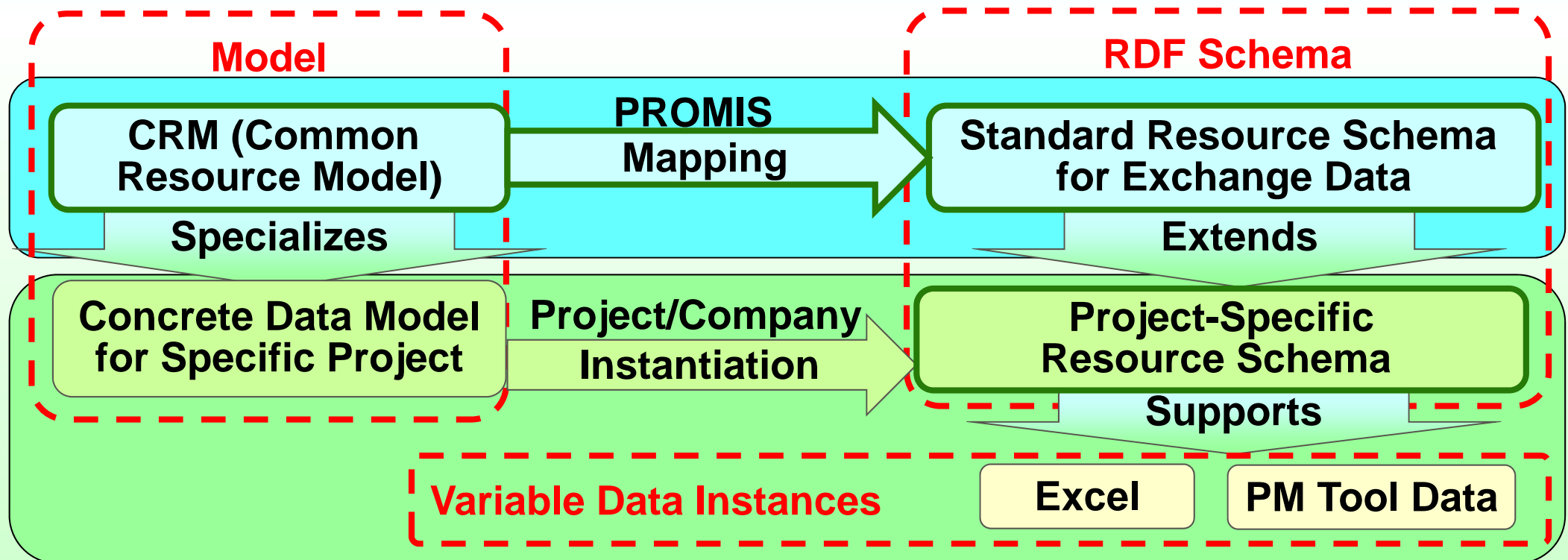
- **Enabling to Exchanging Management Data of Different Schema**
 - **Pattern 1: Multiple Suppliers (X, Y) have to provide a data in the schema of Acquirer (A)**
 - **Pattern 2: A Single Supplier (Y) has to provide data to multiple different schemas of different Acquirers (A, B)**
- **Define Common RDF Schema to Exchange Data, and Provide Mappers to Map between Project Specific Data and Common RDF Schema**



PROMIS Technology

PROMIS Modeling Framework

- **Taming variability of management across SSC**
- **Common Schema for Global Data Exchange across Project**
 - **CRM(Common Resource Model): Schema for Project Management**
 - **Standard Resource Schema: Mapping CRM to RDF**
- **Project-Specific Schema for Data Exchange in a Project**
 - **Project-Specific Resource Schema supports data exchange across tools**

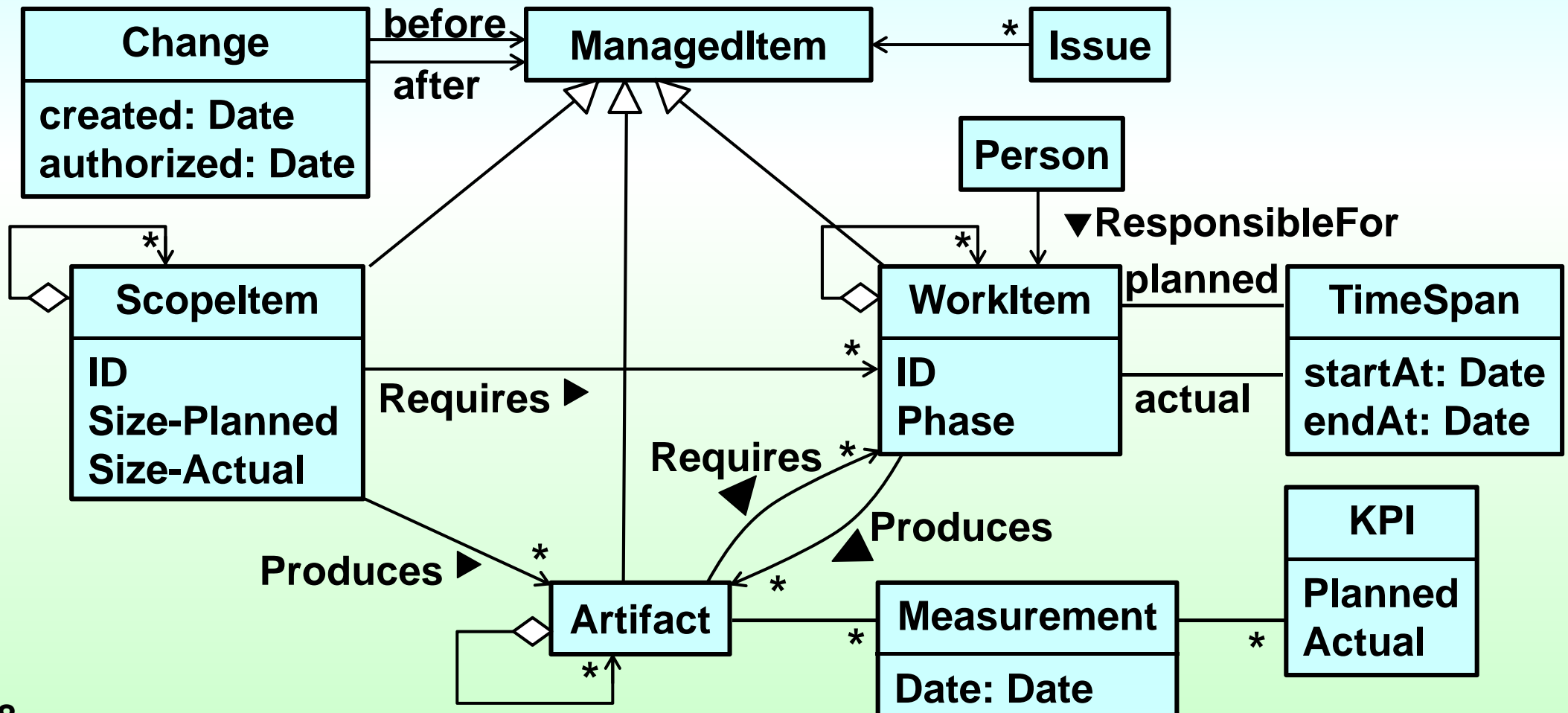


PROMIS Technology

Common Resource Model

👉 Model by Extensive Review of Real Project Data from Members

- 👉 **Scopeltem:** Unit of Contract of Development
- 👉 **WorkItem:** Unit of Work, e.g. Phase, Process, and Activity
- 👉 **Artifact:** Unit of Outcome Produced from WorkItem



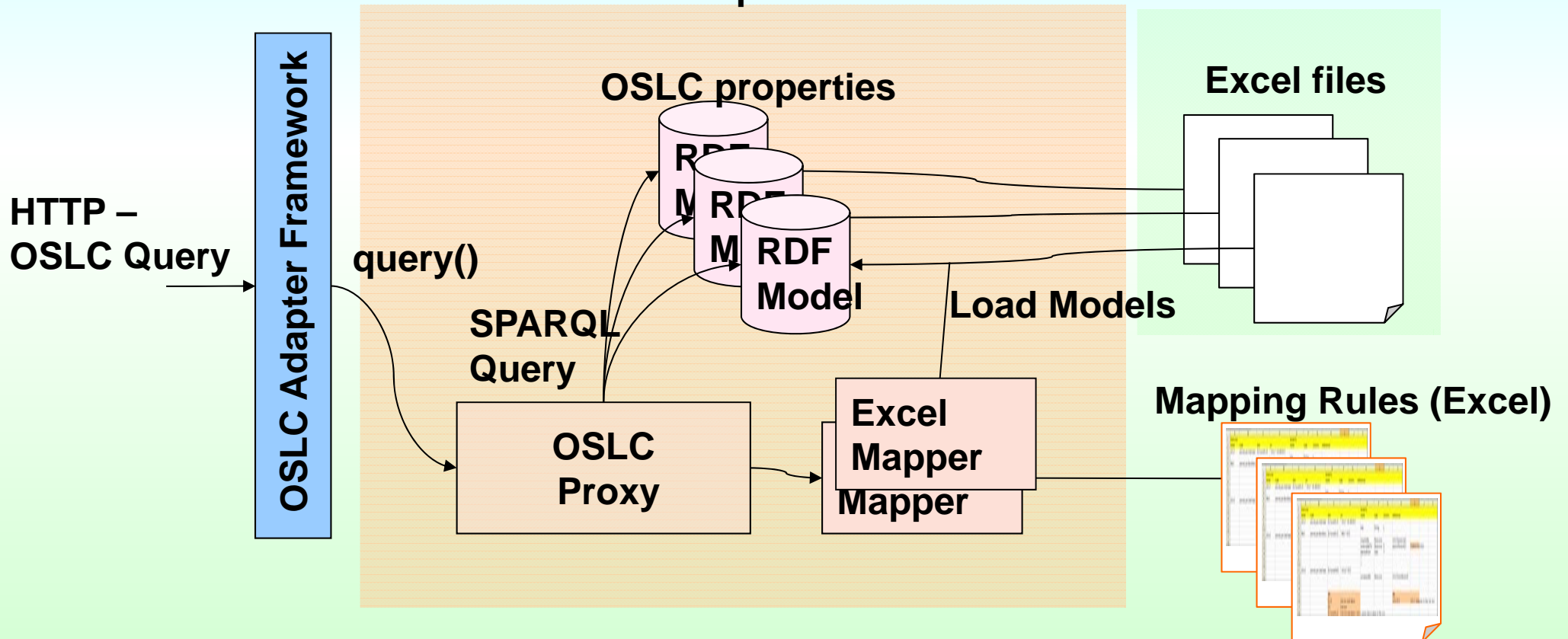
PROMIS Technology

PROMIS Platform

Support to Intensive Use of Excel Data

To Be Revised

PROMIS Adapter for Excel



Experiences and Feedbacks

 **TBA**

Future Roadmap of PROMIS

 **TBA**

PROMIS Architecture

PROJECT Management Information exchange Services Architecture

Jun. 5th (Wed) 1:45-2:45 pm
SSC-1131

**PROMIS Project: Toward a Flexible
Network of Vendors in Software
Supply Chains with a Standard of
Project Management Information**

Thank You for Your Attentions !

PROMIS Consortium

Nanzan University, IBM Japan, Ltd.

Fujitsu Limited, NEC Corporation, NTT Data Corporation

Hitachi, Ltd., and Nomura Research Institute, Ltd

