

Intro to the ALM-PLM
interoperability scenario
1st edition

- Scenario outline
- Typical Roles in scope
- Industrial example
- Main information in scope

Our 1st edition main scenario

- A System Engineer responds to a change in requirements
- <http://open-services.net/bin/view/Main/PlmSystemsEngineeringScenarioSystemsEngineerReactstoChangedRequirements>

The scenario addresses key activities of system responsables

1



A system responsible like a Product Manager or Systems Engineer needs to respond quickly and accurately to requests for changes to meet responsiveness goals and objectives

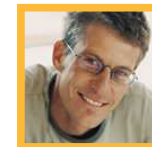


2

A Systems Engineer needs to assess the impact of a change on the affected system definition, which is a combination of the relevant agreed requirements, specifications and implementation descriptions

3

System responsables operate in various projects, communities and organizations for different systems, products and projects



4



A Systems Engineer needs to prepare an update to the system definition as a solution to the change request, working on the appropriate areas, re-using or designing relevant content and calling upon other contributors, as needed, to meet the system objectives



Using the HSUV example – “Make from”
(Make Configuration B from Configuration A by way of a Change Note)

**Product
configuration
“as designed”**



Existing product(s)



Existing engine (ranges)



Existing engine control units (ECUs)



Existing ECU Software

**Related
product
configuration
“as designed”**



Related product



New low emission engine (ranges)

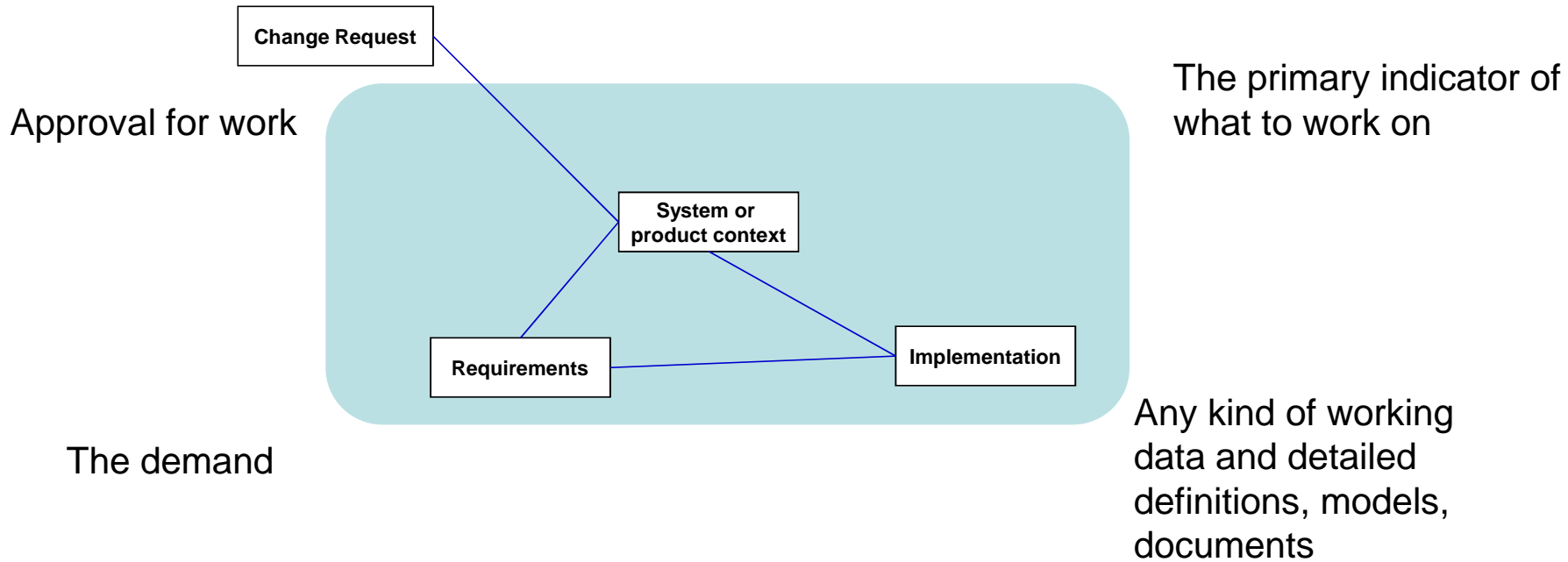


Engine control unit (ECUs) updates

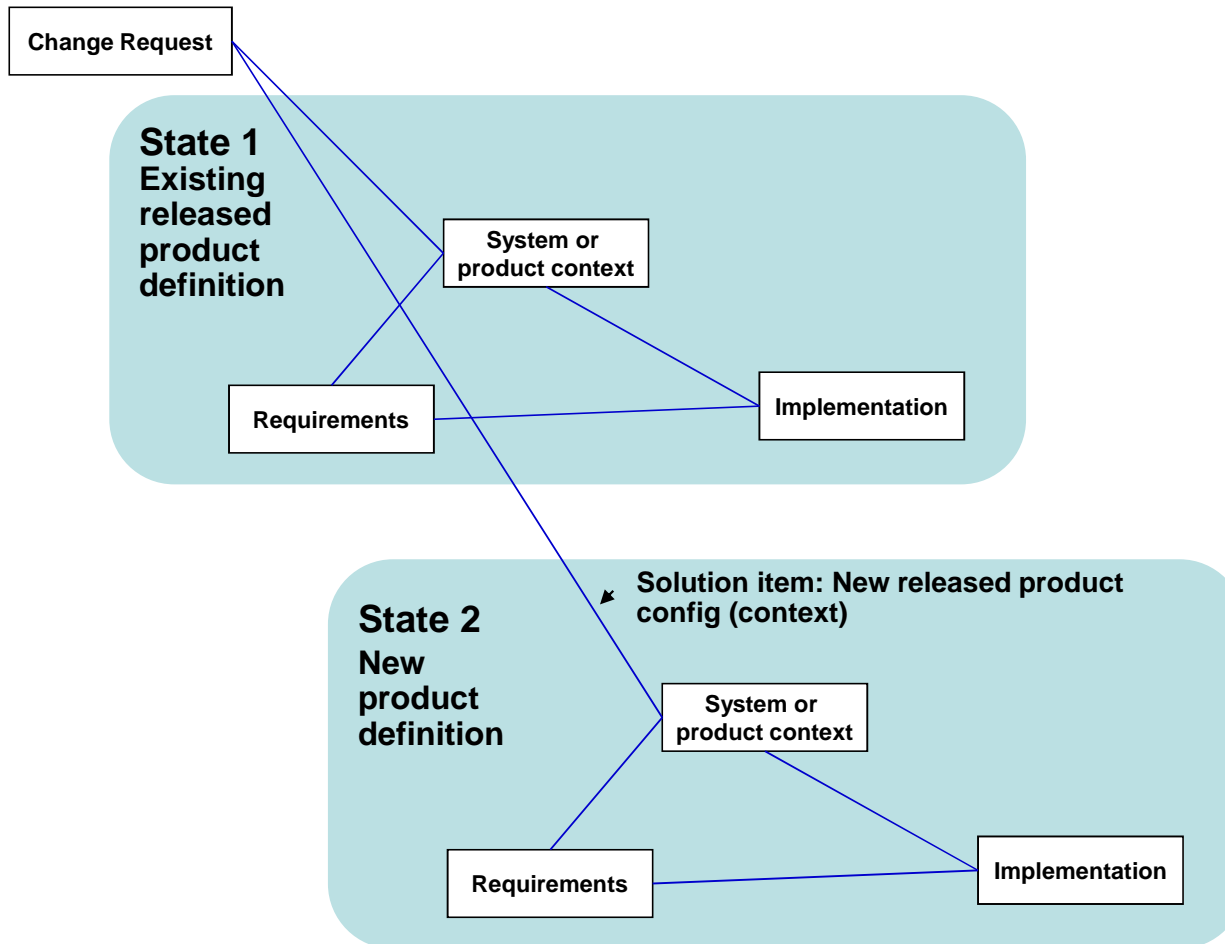


ECU Software updates

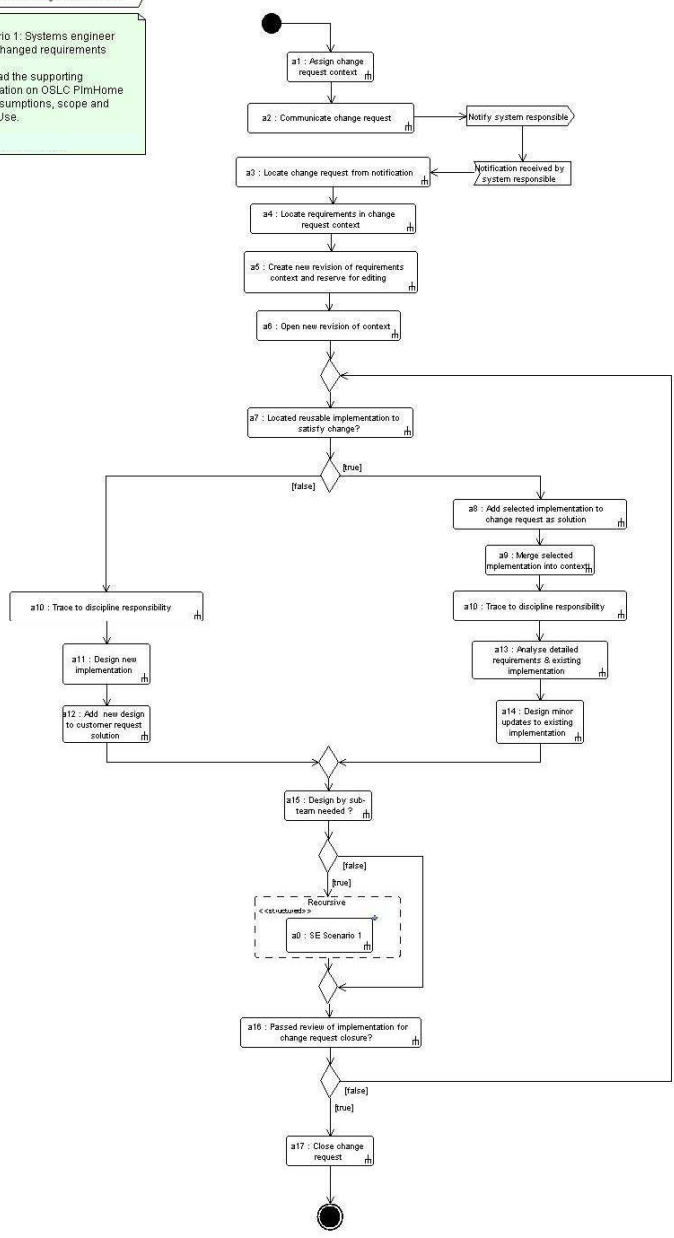
The ALM-PLM Interoperability (1st edition) scenario focuses on the ability to make associations between the 4 key entity types and control them during change



The ALM-PLM Interoperability (1st edition) scenario focuses on the ability to make associations between the 4 key OSLC entities and control them during change



SE Scenario 1: Systems engineer reacts to changed requirements
Please read the supporting documentation on OS LC PimHome wiki for assumptions, scope and Terms of Use.



Scenario Outline

Assign & communicate the change request (a1, a2, a3)

Assign change request context

Submit change request

Locate change request from notification

Apply request context to establish impacted requirements & implementation (a4, a5, a6)

Locate requirements in change request context

Create new revision of requirements context and reserve for editing

Open new revision of context

Locate re-usable implementations to meet changed requirements (a7)

Located reusable implementation to satisfy change?

Then a choice of either update solution by way of adaption of re-usable implementations (a8, a9, a10, a13, a14, a15)

Add selected implementation to change request as solution

Merge selected implementation into context

Trace to discipline responsibility

Analyse detailed requirements & existing implementation

Design minor updates to existing implementation

Design by sub-team needed ?

or design solution by original design (a10, a11, a12, a15)

Trace to discipline responsibility

Design new implementation

Add new design to customer request solution

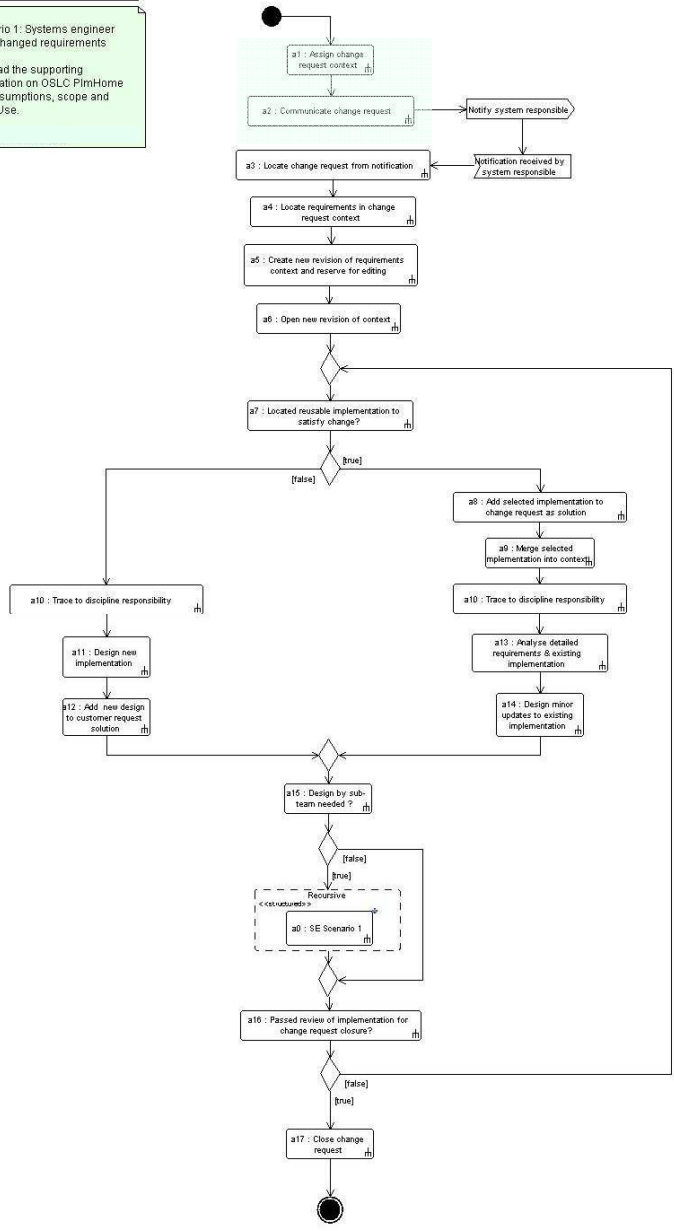
Design by sub-team needed ?

Approve change request solution (a16, a17)

Passed review of implementation for customer request closure?

Close customer request

SE Scenario 1: Systems engineer reacts to changed requirements
Please read the supporting documentation on OS LC PlmHome wiki for assumptions, scope and Terms of Use.



Scenario Outline

Assign & communicate the change request (a1, a2, a3)
 Assign change request context
 Submit change request
 Locate change request from notification

Apply request context to establish impacted requirements & implementation (a4, a5, a6)
 Locate requirements in change request context
 Create new revision of requirements context and reserve for editing
 Open new revision of context

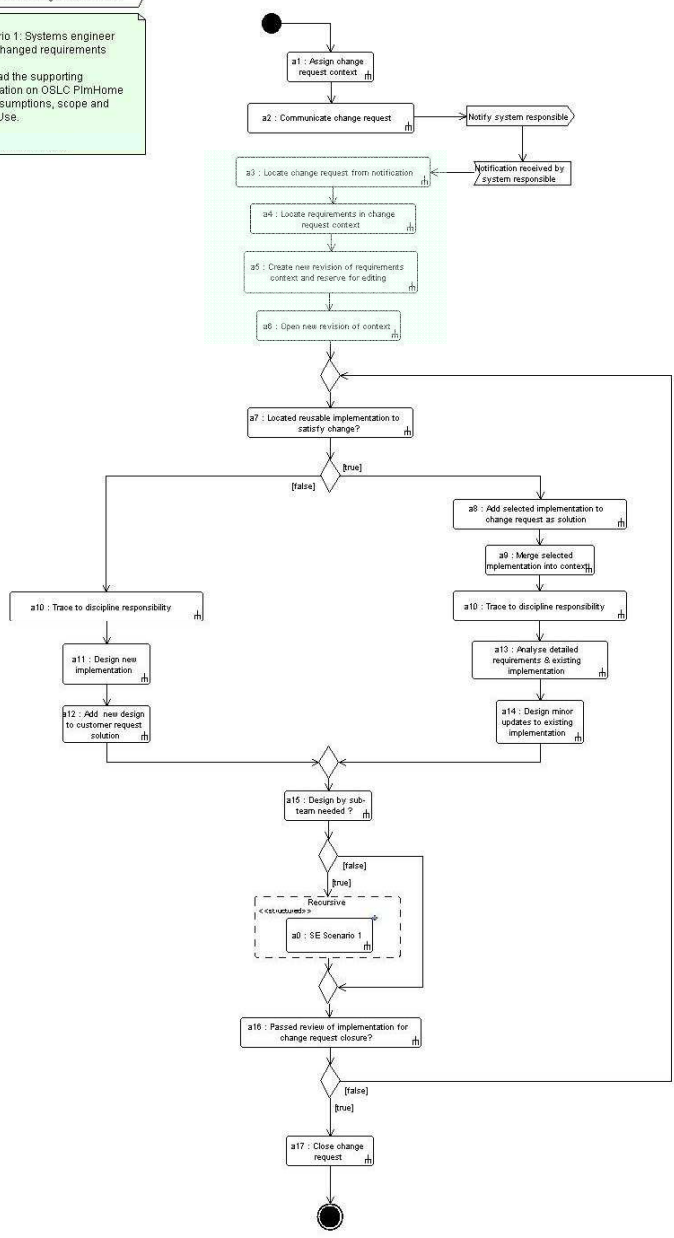
Locate re-usable implementations to meet changed requirements (a7)
 Located reusable implementation to satisfy change?

Then a choice of either update solution by way of adaption of re-usable implementations (a8, a9, a10, a13, a14, a15)
 Add selected implementation to change request as solution
 Merge selected implementation into context
 Trace to discipline responsibility
 Analyse detailed requirements & existing implementation
 Design minor updates to existing implementation
 Design by sub-team needed ?

or design solution by original design (a10, a11, a12, a15)
 Trace to discipline responsibility
 Design new implementation
 Add new design to customer request solution
 Design by sub-team needed ?

Approve change request solution (a16, a17)
 Passed review of implementation for customer request closure?
 Close customer request

SE Scenario 1: Systems engineer reacts to changed requirements
Please read the supporting documentation on OS LC PimHome wiki for assumptions, scope and Terms of Use.



Scenario Outline

Assign & communicate the change request (a1, a2, a3)

Assign change request context

Submit change request

Locate change request from notification

Apply request context to establish impacted requirements & implementation (a4, a5, a6)

Locate requirements in change request context

Create new revision of requirements context and reserve for editing

Open new revision of context

Locate re-usable implementations to meet changed requirements (a7)

Located reusable implementation to satisfy change?

Then a choice of either update solution by way of adaption of re-usable implementations (a8, a9, a10, a13, a14, a15)

Add selected implementation to change request as solution

Merge selected implementation into context

Trace to discipline responsibility

Analyse detailed requirements & existing implementation

Design minor updates to existing implementation

Design by sub-team needed ?

or design solution by original design (a10, a11, a12, a15)

Trace to discipline responsibility

Design new implementation

Add new design to customer request solution

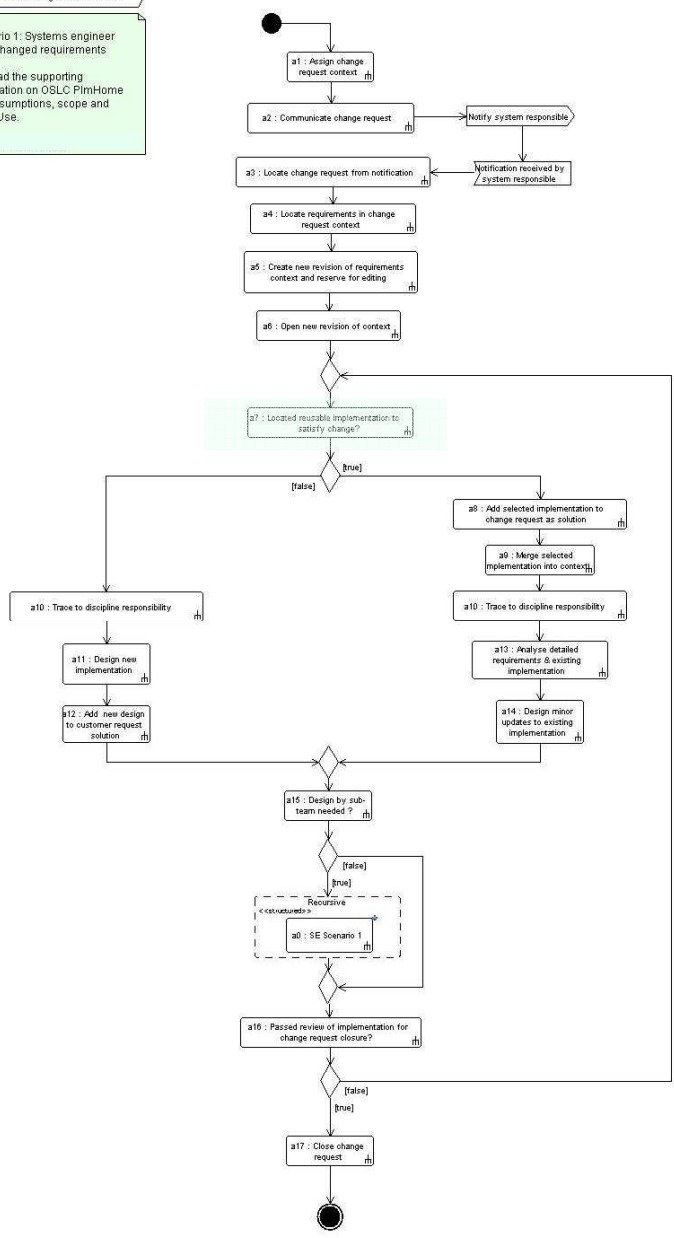
Design by sub-team needed ?

Approve change request solution (a16, a17)

Passed review of implementation for customer request closure?

Close customer request

SE Scenario 1: Systems engineer reacts to changed requirements
Please read the supporting documentation on OSLC PimHome wiki for assumptions, scope and Terms of Use.



Scenario Outline

Assign & communicate the change request (a1, a2, a3)

Assign change request context

Submit change request

Locate change request from notification

Apply request context to establish impacted requirements & implementation (a4, a5, a6)

Locate requirements in change request context

Create new revision of requirements context and reserve for editing

Open new revision of context

Locate re-usable implementations to meet changed requirements (a7)

Located reusable implementation to satisfy change?

Then a choice of either update solution by way of adaption of re-usable implementations (a8, a9, a10, a13, a14, a15)

Add selected implementation to change request as solution

Merge selected implementation into context

Trace to discipline responsibility

Analyse detailed requirements & existing implementation

Design minor updates to existing implementation

Design by sub-team needed ?

or design solution by original design (a10, a11, a12, a15)

Trace to discipline responsibility

Design new implementation

Add new design to customer request solution

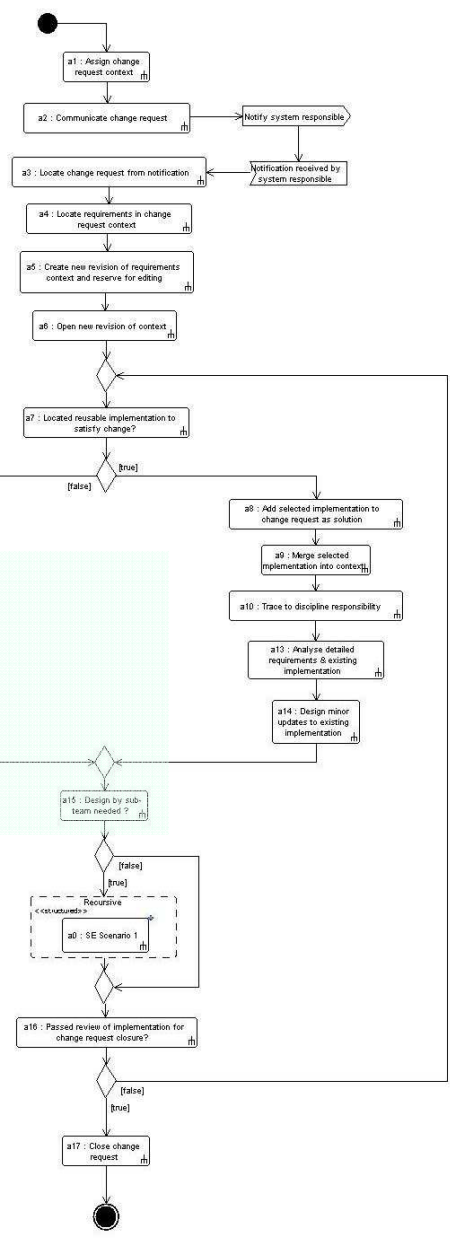
Design by sub-team needed ?

Approve change request solution (a16, a17)

Passed review of implementation for customer request closure?

Close customer request

SE Scenario 1: Systems engineer reacts to changed requirements
Please read the supporting documentation on OS LC PlmHome wiki for assumptions, scope and Terms of Use.



Scenario Outline

Assign & communicate the change request (a1, a2, a3)

Assign change request context

Submit change request

Locate change request from notification

Apply request context to establish impacted requirements & implementation (a4, a5, a6)

Locate requirements in change request context

Create new revision of requirements context and reserve for editing

Open new revision of context

Locate re-usable implementations to meet changed requirements (a7)

Located reusable implementation to satisfy change?

Then a choice of either update solution by way of adaption of re-usable implementations (a8, a9, a10, a13, a14, a15)

Add selected implementation to change request as solution

Merge selected implementation into context

Trace to discipline responsibility

Analyse detailed requirements & existing implementation

Design minor updates to existing implementation

Design by sub-team needed ?

or design solution by original design (a10, a11, a12, a15)

Trace to discipline responsibility

Design new implementation

Add new design to customer request solution

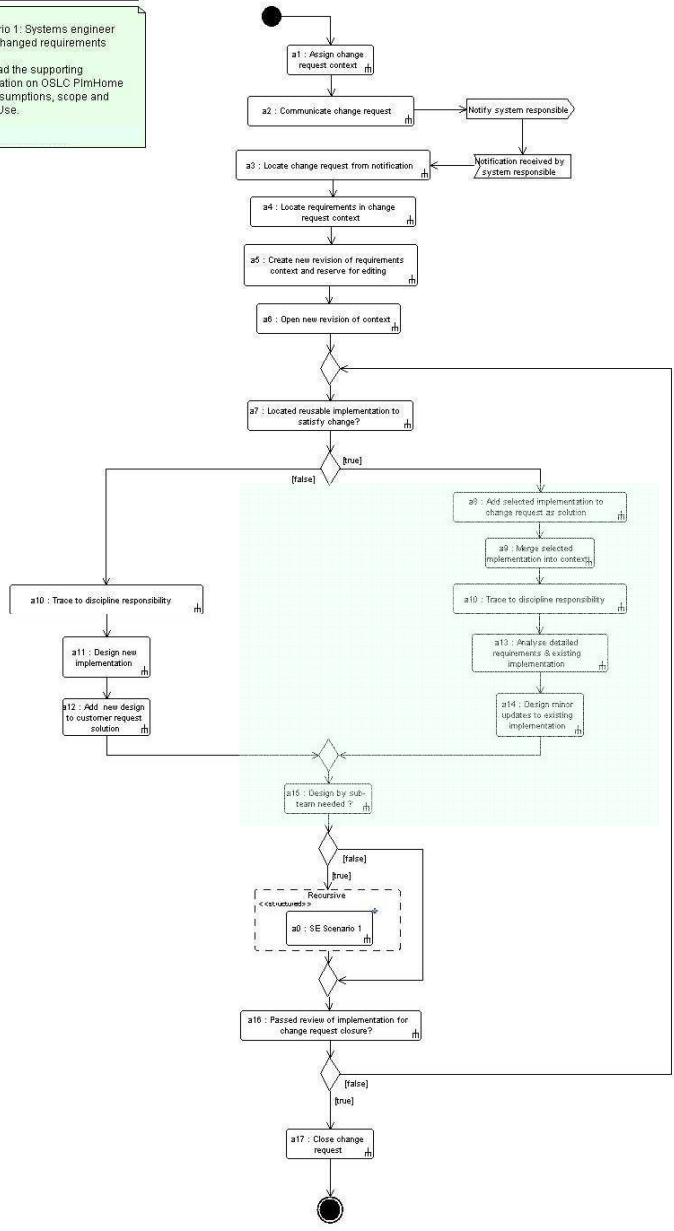
Design by sub-team needed ?

Approve change request solution (a16, a17)

Passed review of implementation for customer request closure?

Close customer request

SE Scenario 1: Systems engineer reacts to changed requirements
Please read the supporting documentation on OS LC PimHome wiki for assumptions, scope and Terms of Use.



Scenario Outline

Assign & communicate the change request (a1, a2, a3)

Assign change request context

Submit change request

Locate change request from notification

Apply request context to establish impacted requirements & implementation (a4, a5, a6)

Locate requirements in change request context

Create new revision of requirements context and reserve for editing

Open new revision of context

Locate re-usable implementations to meet changed requirements (a7)

Located reusable implementation to satisfy change?

Then a choice of either update solution by way of adaption of re-usable implementations (a8, a9, a10, a13, a14, a15)

Add selected implementation to change request as solution

Merge selected implementation into context

Trace to discipline responsibility

Analyse detailed requirements & existing implementation

Design minor updates to existing implementation

Design by sub-team needed ?

or design solution by original design (a10, a11, a12, a15)

Trace to discipline responsibility

Design new implementation

Add new design to customer request solution

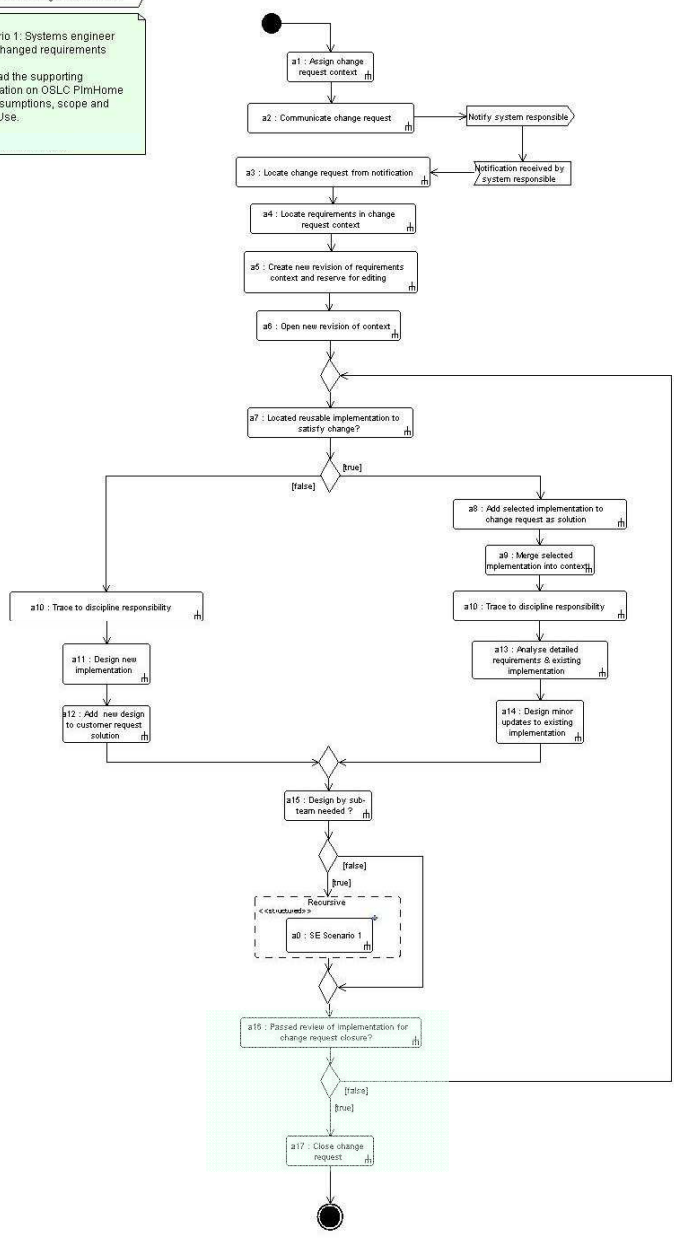
Design by sub-team needed ?

Approve change request solution (a16, a17)

Passed review of implementation for customer request closure?

Close customer request

SE Scenario 1: Systems engineer reacts to changed requirements
Please read the supporting documentation on OSLC PimHome wiki for assumptions, scope and Terms of Use.



Scenario Outline

Assign & communicate the change request (a1, a2, a3)

Assign change request context

Submit change request

Locate change request from notification

Apply request context to establish impacted requirements & implementation (a4, a5, a6)

Locate requirements in change request context

Create new revision of requirements context and reserve for editing

Open new revision of context

Locate re-usable implementations to meet changed requirements (a7)

Located reusable implementation to satisfy change?

Then a choice of either update solution by way of adaption of re-usable implementations (a8, a9, a10, a13, a14, a15)

Add selected implementation to change request as solution

Merge selected implementation into context

Trace to discipline responsibility

Analyse detailed requirements & existing implementation

Design minor updates to existing implementation

Design by sub-team needed ?

or design solution by original design (a10, a11, a12, a15)

Trace to discipline responsibility

Design new implementation

Add new design to customer request solution

Design by sub-team needed ?

Approve change request solution (a16, a17)

Passed review of implementation for customer request closure?

Close customer request